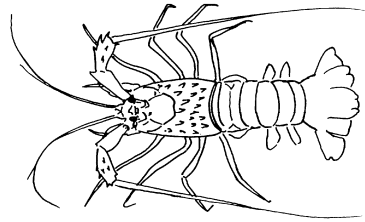
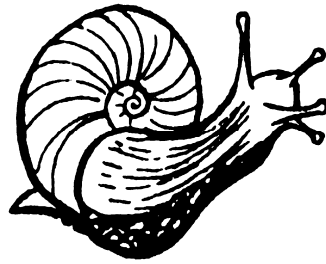


LES PETITS ANIMAUX



la crevette



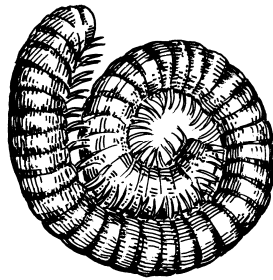
ikishyongo

l'escargot m.



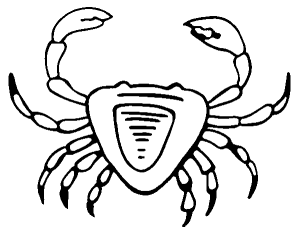
umushundo

la sangsue



mujongoleerwa

le mille-pattes



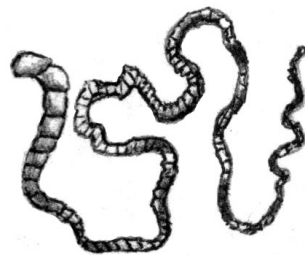
namukorogootwa

le crabe



munyambwe

le ver



mulombo

le ténia

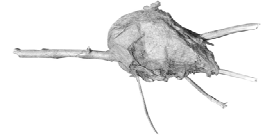
LES ARBRES



caterpillar tree



catepillar



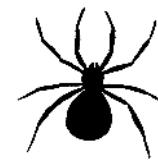
caterpillar house



LES INSECTES



ulusaazi
la mouche



nalutangulira
l'araignée f.



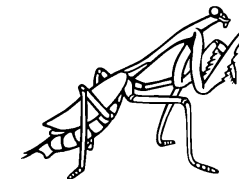
inguha
le tique



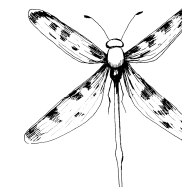
namuzungutu
la coccinelle



namuzindeere
le scarabée



namuli-kondo
la mante religieuse



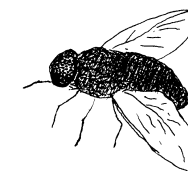
umuzengezi
la libellule



ikishyongo
la limace



inda
le pou



ikibugu
la mouche tsé-tsé




inguku
la puce



urumina
le scorpion



ingeeke
la luciole



Ulweje luhanya lwo' lus-
hona ku' mugende
gwa' naluhaze.

IBIZIMU



uluhasi

la fourmi



ulweje

le cafard



termite

le termite soldat



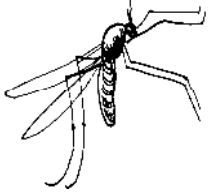
akashwa

le termite



ulujuki

l'abeille f.



umubu

le moustique



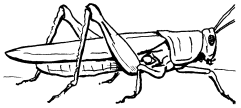
ikibeere-beere

le papillon



umugunga

la chenille



inzige

la sauterelle



isiibu

la guêpe



ihaazi

le criquet



ivuuja

le chique

La punaise est un petit insecte, nuisible à l'homme. Jadis, l'homme et la punaise se sont tellement aimés. Ils dormaient sur le même lit. Il arrivait la nuit, la punaise commença à piquer l'homme. L'homme s'inquiéta de cet acte de piqûre. Il prit le feu et mis sous le lit. Toutes les punaises se trouvant dans ce lit moururent <<Ko>>. L'histoire nous résume de deux intimes; qu'il ne faut jamais chercher de problème entre nous.



ikyuhu

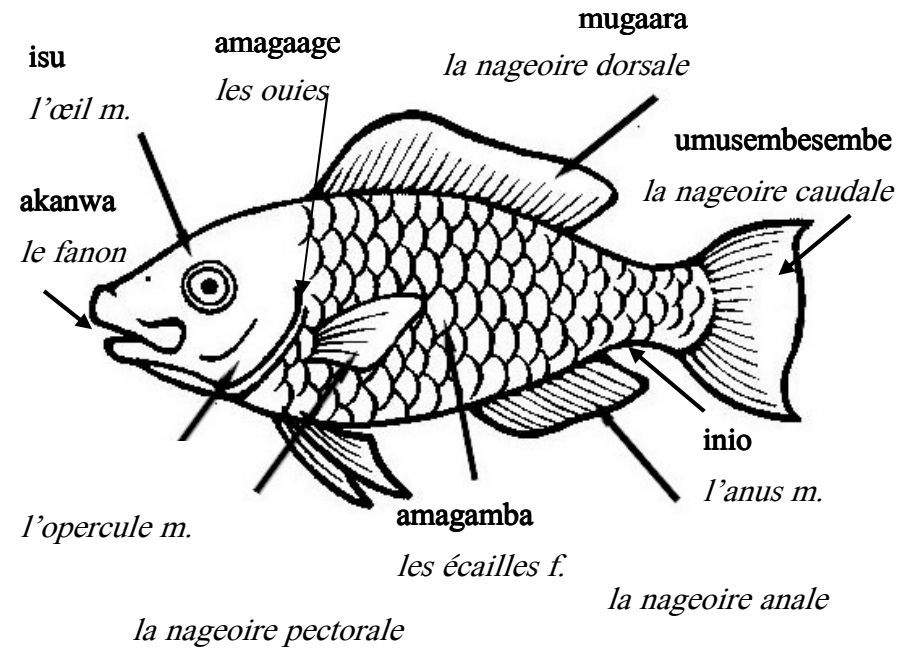
la punaise

LES ARBRES



PARTS OF A FISH

LES PARTIES D'UN POISSON



les nageoires f.

FISH

LE POISSON

LES ARBRES

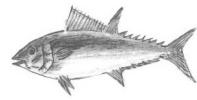


sardine

la sardine

ingege

le tilapia



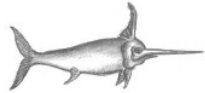
tuna

le thon



shoohi

l'anguille f.



swordfish

le poisson-épée



cod

la morue



ishangala

le capitaine



shoohi

l'anguille f.



(makoke)



(lengolo)



shark

le requin



umushishi

tamarinier



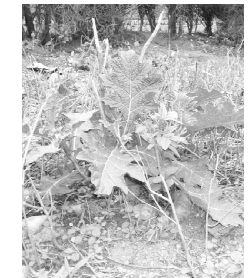
kilondolondo

ficus



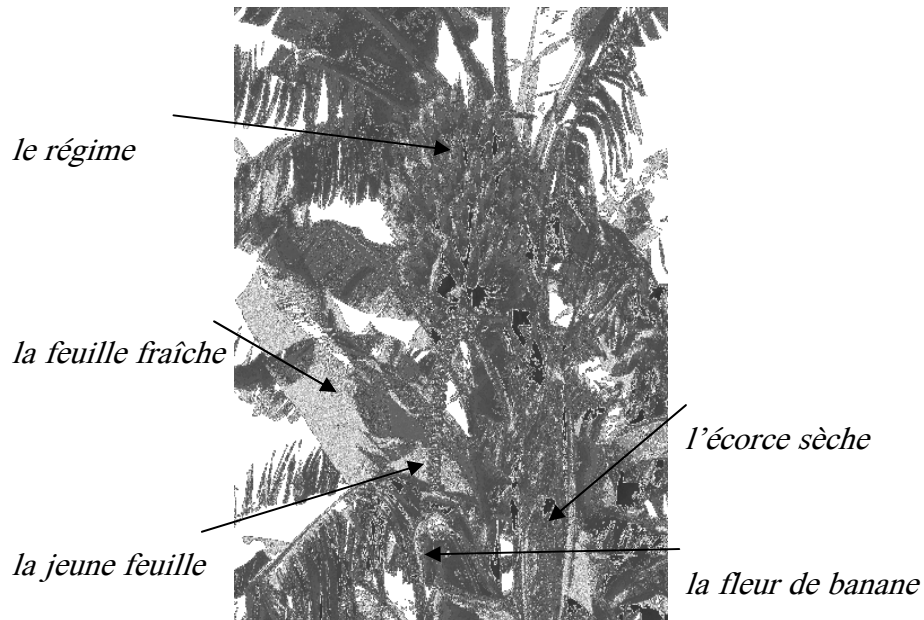
kikuyu

ficus



Amasu ge'fwi galola ku'mudubi.

LE BANANIER



la pousse

la feuille

la nervure principale



la tige



le doigt



la main



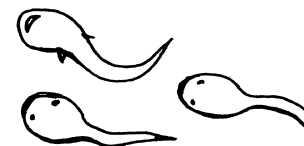
la feuille sèche

LES AMPHIBIENS



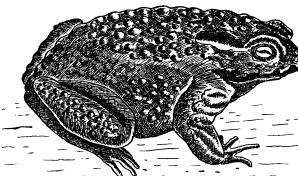
mudoke

la grenouille



ikiboroboro

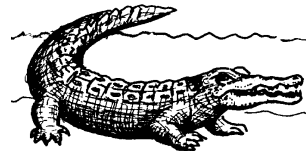
le têtard



kere, boto

le crapaud

IBIRI MU'YANDUUKA



ingoona

le crocodile



umujoka

le serpent



umushalabira

le lézard

LES REPTILES



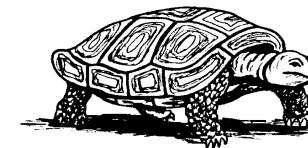
ikibululu

la tête-bleue



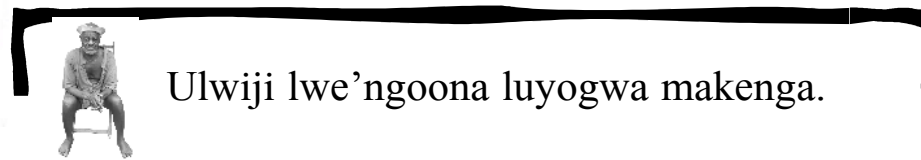
hibululu

le gecko



akafulo

la tortue

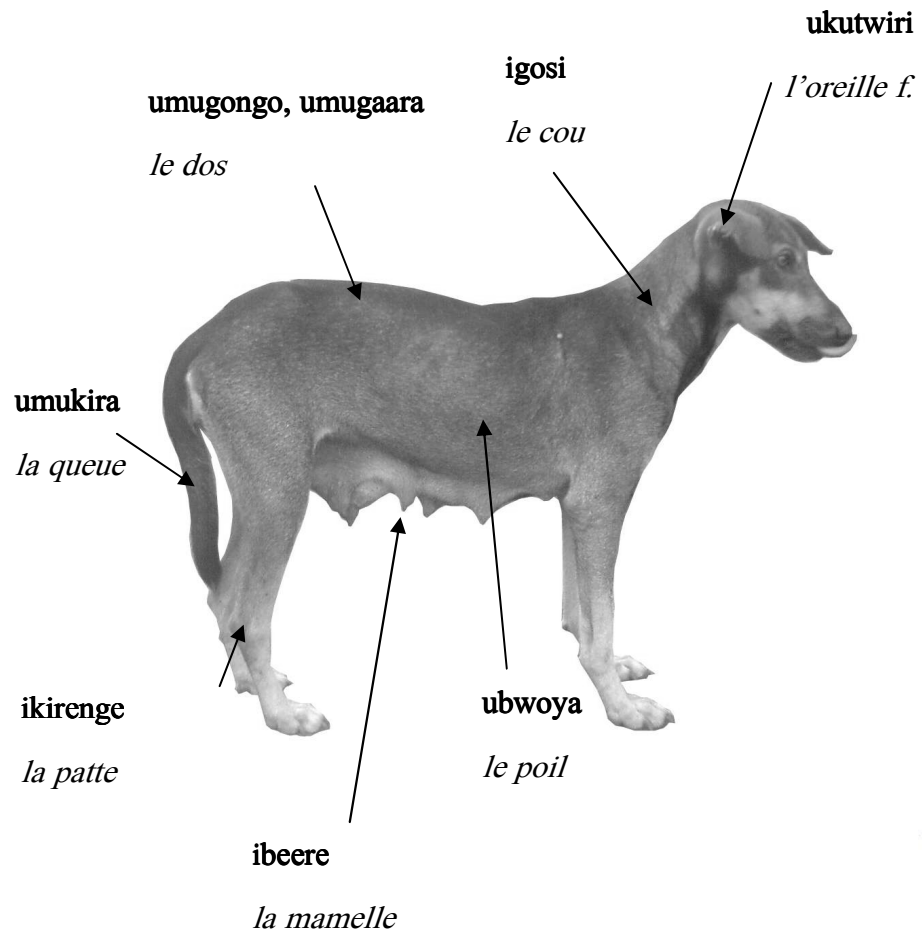


Ulwiji lwe'ngoona luyogwa makenga.

IBITONDOLA YE'NYOZA

PARTIES D'UN MAMMIFÈRE

L'ARBRE



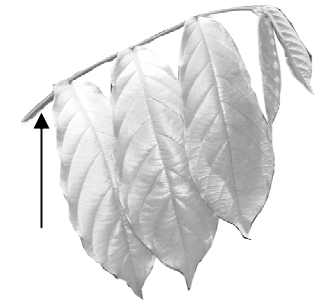
le boa



la fleur



le bourgeon



la tige



la feuille



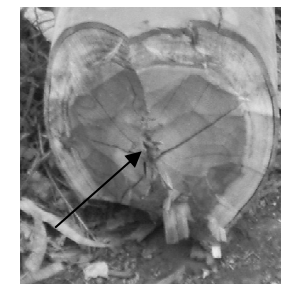
la sève



l'écorce f.



l'épine f.



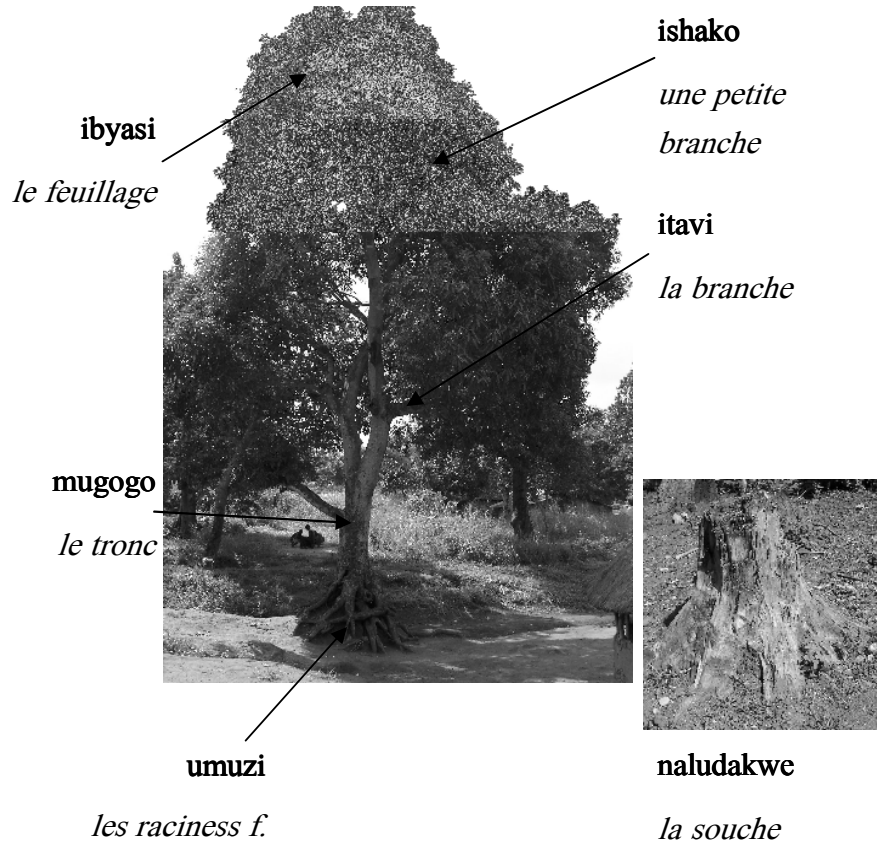
le noyau



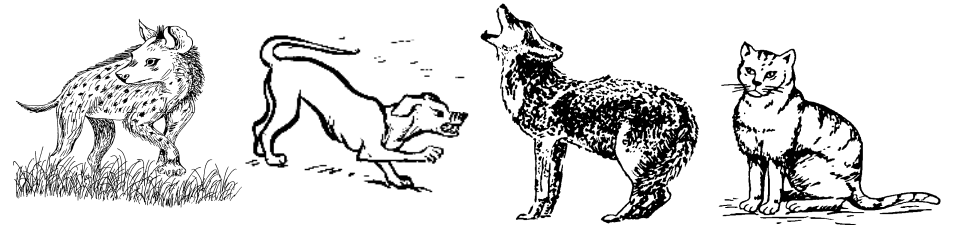
le jeune champignon

IBITONDOLA BYE'KITI

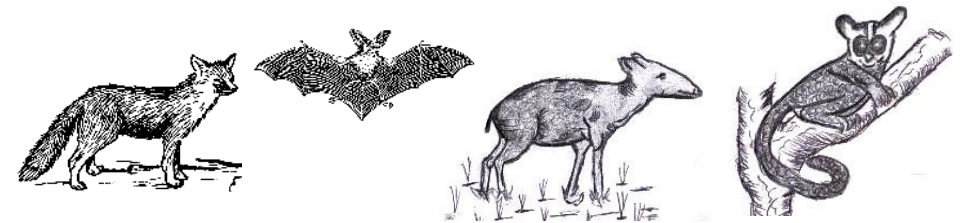
LES PARTIES D'UN ARBRE



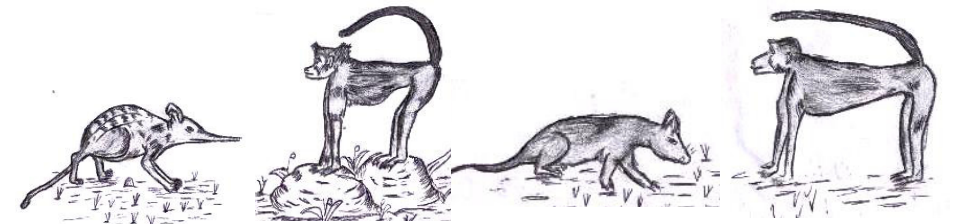
LES MAMMIFÈRES



ndaama **kabwa** **wolf** **inyaabu**
l'hyène f. *le chien* *le loup* *le chat*



nyambwe **najoojo**
le renard *la chauve-souris* *le céphalophe* *galago d'allène*



umukumbi
le rat à trompe à damier *cercocèbe à jong grise* *le rat de Gambie* *la cercocèbe agile*

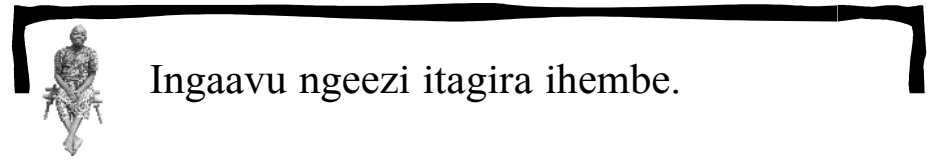


fumer

Fumer est prejudiciable à la santé.

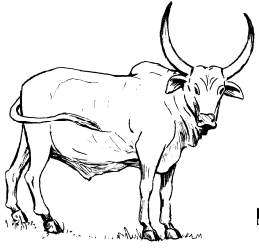


la cigarette



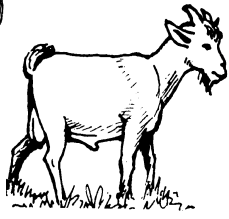
Ingaavu ngeezi itagira ihembe.

MAMMALS



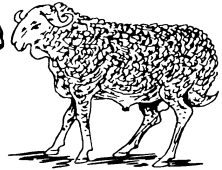
ingaavu

la vache



imbene

la chèvre



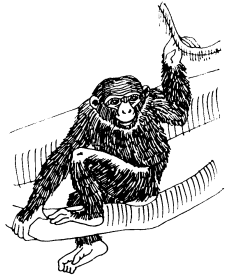
ikibuzi

le mouton



ulukwavu

le lièvre



ishoko

le chimpanzé



ikyunguti

le gorille



mbongo

l'antilope f.



ingulube

ya'mu'kishuka

le sanglier



imbeba

le rat



ingima

le singe



kishegeshe

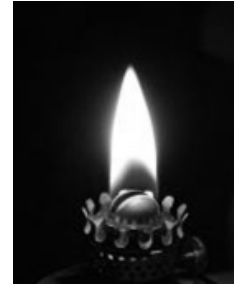
le porc-épic



malindyé

la souris

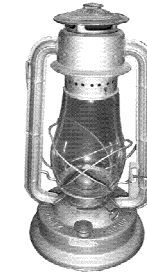
LE FEU



la flamme



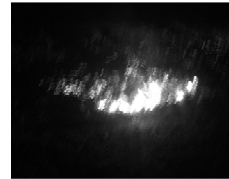
la fumée



*la lampe à
pétrole*



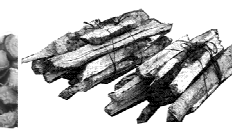
le tison



l'incendie m.



*le bois de
chauffage*



le fagot

la brûlure

le cendre

incendier

*le feu de
brousse*

*le feu de
chasse*

Le Feu

Le feu est un élément essentiel dans la vie de l'homme. Il intervient pour la cuisson, la préparation des champs, pour se réchauffer, pour forger et autres choses.

Toutefois, le feu est dangereux car il peut provoquer des incendies des brousses ou des maisons.

Faisons attention à l'usage du feu car il peut aussi provoquer la mort.

Amasu ge'nyaabu gatamala busore.

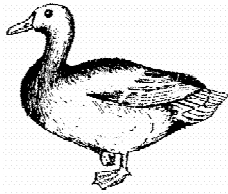


UTUNYUNI



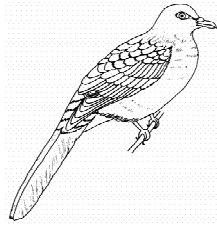
ikyugu

l'oie f.



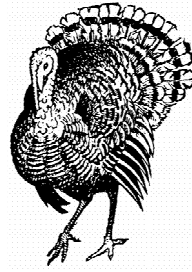
ibaata

le canard



ingunde

le pigeon

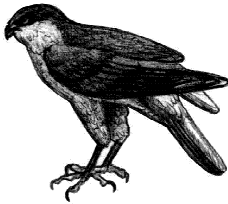


indendo

le dindon

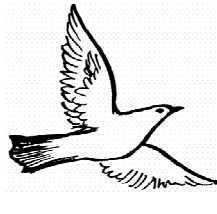


la tourterelle



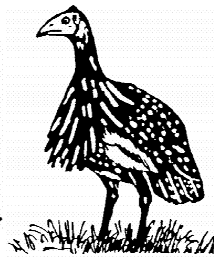
kashuuta

l'épervier m.



ihumba

la colombe



umukukuzo

la pintade



hungwe,
namujongo

le corbeau



nafufulu

le hibou

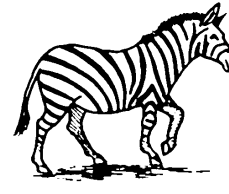
le gendarme

le garde-boeuf



le toucan

LES MAMMIFÈRES



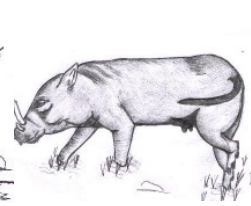
zebra

le zèbre



umulunga

le chacal

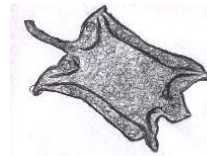


wart hog

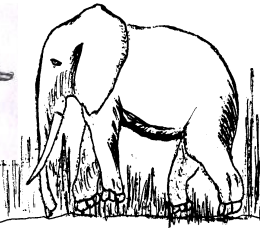
l'hylochère m.



l'okapi m.

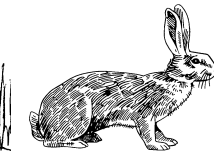


l'écureuil volant



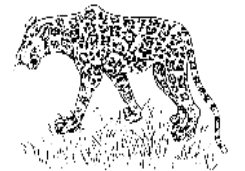
injovu

l'éléphant m.



sungura

le lapin



ingwi

le léopard

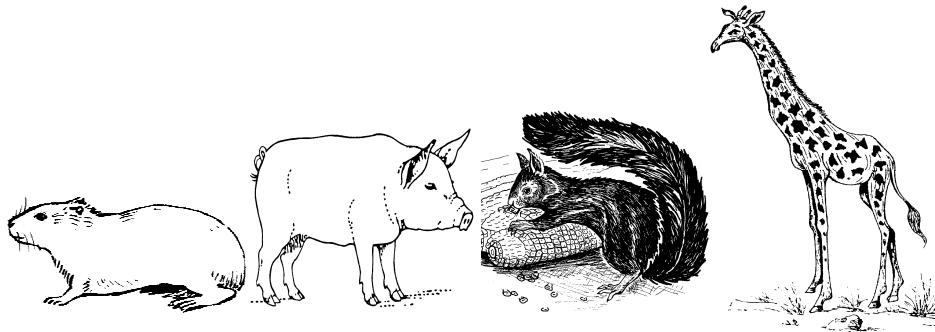
Le léopard, le lion et l'éléphant vivent dans la forêt. Ils étaient de vrais amis. Tous broutent et sont aussi cruels que d'autres animaux comme la chèvre, la vache, le singe, le sanglier, le porc-épic, le pangolin etc.

Un jour, le lapin trompa l'éléphant et le singe. Ces derniers le cherchèrent et l'attrapèrent « puu ». Ils tirèrent ses oreilles comme pour le punir, c'est ce qui fait que jusque maintenant le lapin à des oreilles longues.

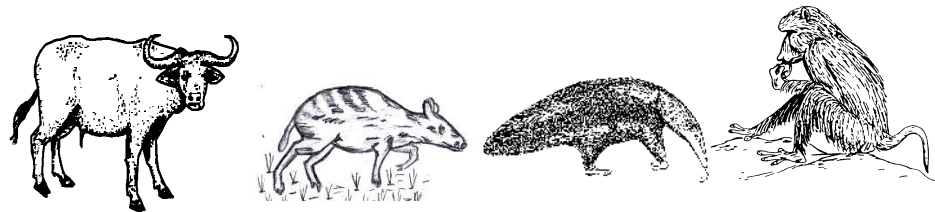


Nyunda atafwa keru nga'kavigiiri.

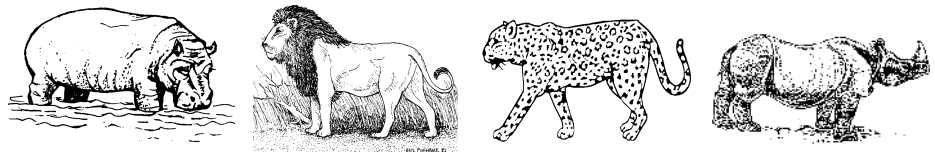
INYOZA



idende **ngulube** **kishindi** **le girafe**
le cobaye *le cochon* *l'écureuil m.*



le buffle **le chevrotain** **le pangolin** **le babouin**
le buffle *le chevrotain* *le pangolin* *le babouin*

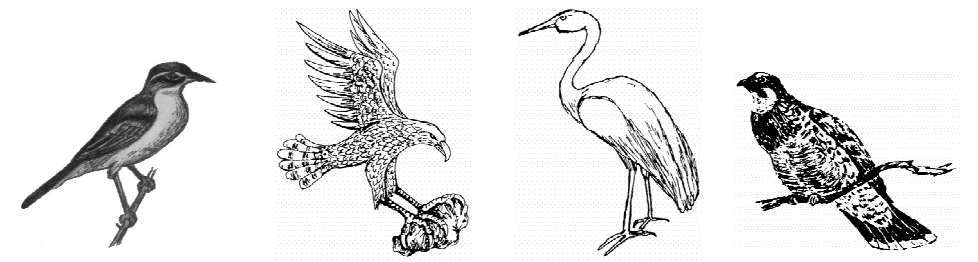


invubu **indare** **imondo** **rhinoceros**
l'hippopotame m. *le lion* *le guépard* *le rhinocéros*

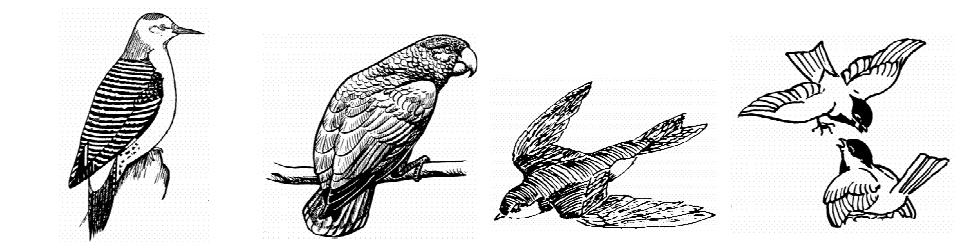


kihumbu **la civette** **la nandinie**

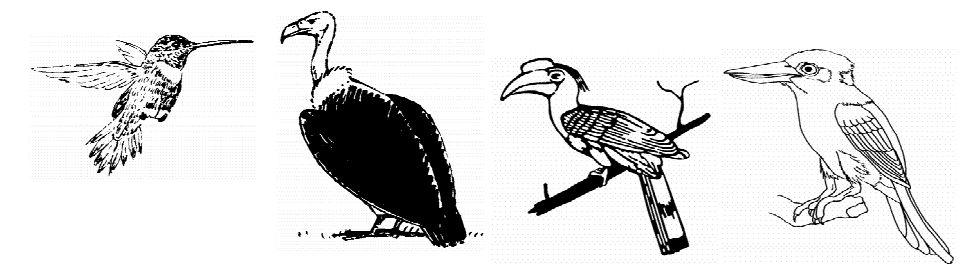
LES OISEAUX



akashiishi **nakasare** **umusambi** **ingware**
la bergeronnette *l'aigle* *l'héron m.* *la perdrix*




le pic **le perroquet** **l'hirondelle f.** **le moineau**
le pic *le perroquet* *l'hirondelle f.* *le moineau*



munzomero **ingukuma** **le colao** **namuloba-fwi**
le colibri *le vautour* *le colao* *le martin-pêcheur*



 Ihinyuni hinini hyo'hiluza amashala.